

About Datest

Datest is the preeminent provider of integrated test and inspection services for Silicon Valley and beyond, since 1984.

We serve the EMS Provider and OEM Markets with multiple PCBA and subsystem test capabilities, including In-Circuit, Functional, Flying Probe Test, X-Ray Inspection (2D, 3D, and 5DX AXI) and Boundary Scan.

We also provide Value-Added Services:

- ▶ Troubleshooting, diagnosis, debug and rework of failed boards and “bonepiles”
- ▶ Failure and Root Cause Analysis, Dispute Resolution
- ▶ DFM and DFT analysis
- ▶ Center of Expertise for Goepel Boundary Scan Products and Applications
- ▶ Agilent/Keysight Channel Partner and 3070 Solutions Partner
- ▶ Reverse Engineering Services

Datest is AS9100C:2008 and ISO9001:2008 certified, as well as ITAR registered.



47810 Westinghouse Drive
Fremont, CA 94539

Phone: 510-490-4600

Fax: 510-490-4111

Email: info@datest.com

Website: www.datest.com



DATEST SERVICES

Integrated
Testing
Solutions



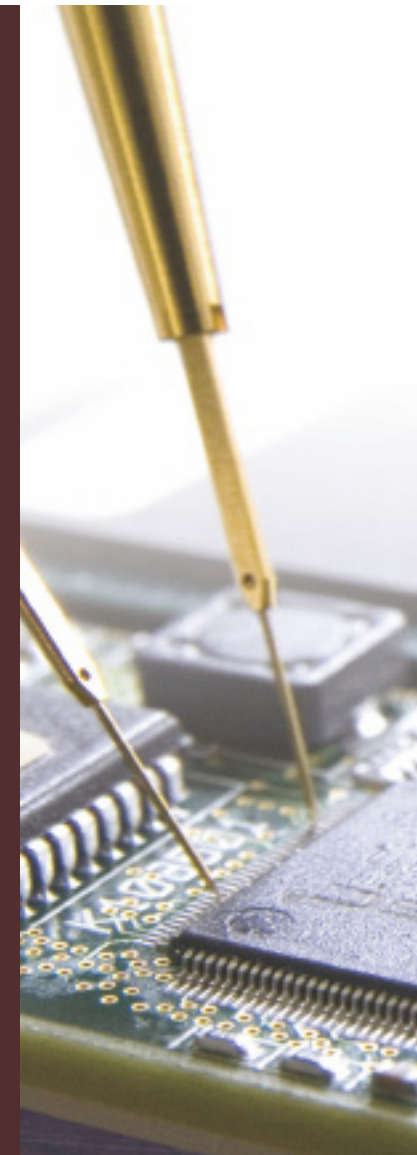
Datest Test
Engineering
Inspection
and Failure
Analysis
SERVICES

Winner 2016 Circuits Assembly
Service Excellence Award

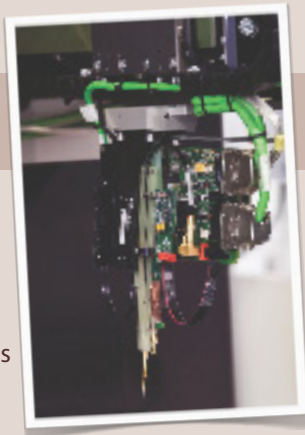
Winner 2011, 2012, 2017
Circuits Assembly NPI Award

Winner 2011, 2013 and 2015
Global Technology Award

www.datest.com



Capabilities



- ▶ 2D X-Ray Inspection
- ▶ 3D X-Ray Inspection
- ▶ 3D Digital Tomosynthesis
- ▶ Non-destructive and Destructive Failure Analysis
- ▶ Flying Probe Test
- ▶ In-Circuit Test (ICT)
- ▶ Design For Manufacturing (DFM)
- ▶ Design For Testability (DFT)
- ▶ JTAG/Boundary Scan Testing and Analysis
- ▶ Process management consulting and dispute resolution
- ▶ Data Translation CAD to IPC2511 GenCAM, FATF Gerber to GenCAM, FATF
- ▶ Scanning Acoustic Microscopy (SAM) analysis*
- ▶ Automated X-Ray Inspection (AXI)
- ▶ Laboratory Services including SEM, EDX, XRF, FTiR, and Thermal Profiling*
- ▶ Counterfeit component detection
- ▶ Small Scale Box Build Manufacturing
- ▶ Dye & Pry and Cross-Sectioning* **With Trusted Partner*
- ▶ PCBA/PCBF Reverse Engineering Services
- ▶ Fixture Design & Manufacturing
- ▶ On-Site installation, verification, and On-going Support
- ▶ Functional Test and Test Development (C, Labview, Labwindows CV)
- ▶ "Bonepile" rehabilitation of functional, system and field failures
- ▶ Troubleshooting and rework of failed PCBAs
- ▶ BGA removal, replacement, and reballing (RoHS and Non-Rohs)
- ▶ Test statistics, failure and trend reporting

Equipment

- ▶ Keysight/Agilent 3070 (including x1149, CET, Silicon Nails, and VTEP)
- ▶ Keysight/Agilent 5DX Automated X-ray Inspection (AXI)
- ▶ SPEA 4060 Dual-Sided Flying Probe w/Goepel CASCON Boundary Scan
- ▶ Nordson Dage XD7600NT500 Ruby X-Ray Inspection System with X-Plane (CT-Scan) Technology
- ▶ VJ Technologies 225kV Microfocus CT System (for large objects up to 110lb) with Vi3, Fraunhofer, and Volume Graphics VG Studio MAX viewing and analysis software.
- ▶ GenRad/Teradyne 2286/2287
- ▶ Teradyne Z1820
- ▶ High-Energy Xray and CT Capability, in partnership with VJ Technologies.
- ▶ Teradyne 885X Spectrum
- ▶ Burn-In Oven
- ▶ Functional Test
- ▶ JTAG/Boundary Scan
 - Goepel CASCON (on Spea 4060 Flying Probe)
 - Asset Scanworks (Benchtop)
 - Keysight/Agilent x1149 (on Keysight 3070)
- ▶ DEN-ON RD-500 Series III Semi-Automated BGA Rework System

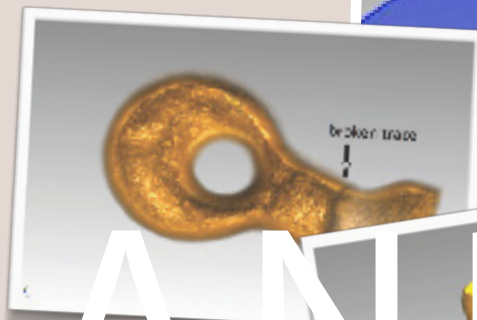
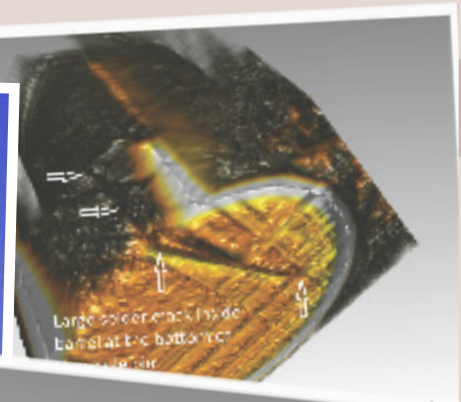
Certifications and Affiliations

Electronic Assembly Workmanship Certification:
 IPC-A-600, IPC-A-610, IPC-A-620, J-STD-001, IPC-7711/7721

Counterfeit Component Detection:
 Pro-STD-001

Professional Affiliations:
 IEEE, IPC, SMTA, APICS, EIPC, ASNT

Certifications:
 AS9100C:2008
 ISO9001:2008
 ITAR



DEMAND TEST