

# About Datest

Datest is the preeminent provider of integrated test and inspection services for Silicon Valley and beyond, since 1984.

We serve the EMS Provider and OEM Markets with multiple PCBA and subsystem test capabilities, including In-Circuit, Functional, Flying Probe Test, X-Ray Inspection (2D, 3D, and 5DX AXI) and Boundary Scan.

We also provide Value-Added Services:

- ▶ Troubleshooting, diagnosis, debug and rework of failed boards and "bonepiles"
- ▶ Failure and Root Cause Analysis, Dispute Resolution
- ▶ DFM and DFT analysis
- ▶ Center of Expertise for Goepel Boundary Scan Products and Applications
- ▶ Agilent/Keysight Channel Partner and 3070 Solutions Partner
- ▶ Reverse Engineering Services

Datest is AS9100:D2015 and ISO9001:2015 certified, as well as ITAR registered.



47810 Westinghouse Drive

Fremont, CA 94539

Phone: 510-490-4600

Fax: 510-490-4111

Email: [info@datest.com](mailto:info@datest.com) Website:

[www.datest.com](http://www.datest.com)



## DATEST SERVICES

Integrated  
Testing  
Solutions



### Datest Test Engineering Inspection and Failure Analysis SERVICES

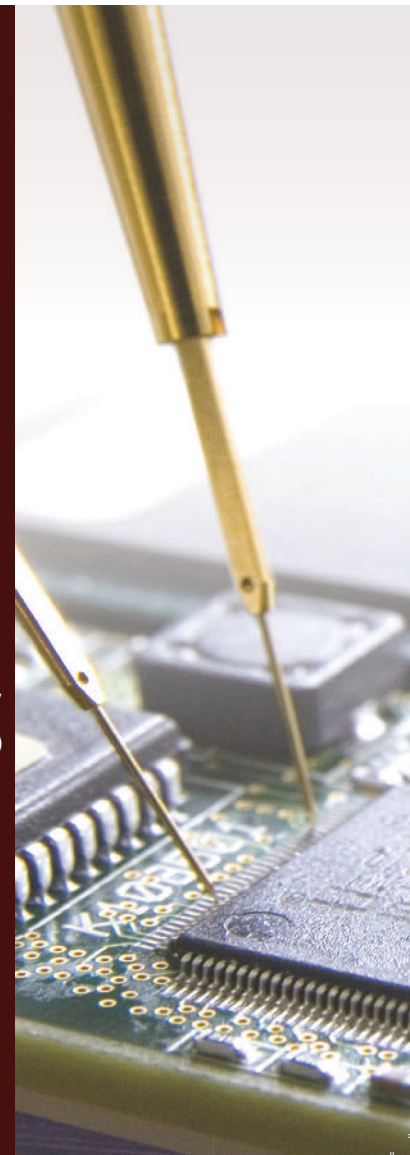
Winner Circuits Assembly  
Service Excellence Award (SEA):  
2016, 2018, 2019, 2020, 2021,  
2022 (In the category of Test  
Laboratories)

Winner Global SMT & Packaging  
Global Technology Award: 2011,  
2013, 2015, 2018, 2019, 2021  
(In the category of Test Services)

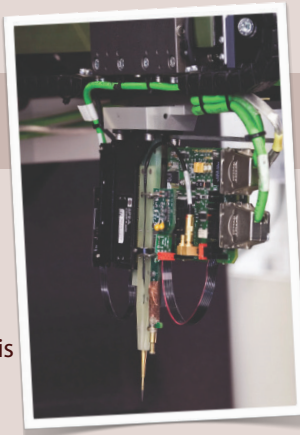
Winner Circuits Assembly NPI  
Award: 2011, 2012, 2017

Winner Mexico Technology  
Award: 2019, 2021, 2022

[www.datest.com](http://www.datest.com)



## Capabilities



- ▶ 2D X-Ray Inspection
- ▶ 3D X-Ray Inspection
- ▶ 3D Digital Tomosynthesis
- ▶ Non-destructive and Destructive Failure Analysis
- ▶ Flying Probe Test
- ▶ In-Circuit Test (ICT)
- ▶ Design For Manufacturing (DFM)
- ▶ Design For Testability (DFT)
- ▶ JTAG/Boundary Scan Testing and Analysis

- ▶ Process management consulting and dispute resolution
- ▶ Data Translation CAD to IPC2511 GenCAM, FATF Gerber to GenCAM, FATF
- ▶ Scanning Acoustic Microscopy (SAM) analysis\*
- ▶ Automated X-Ray Inspection (AXI)
- ▶ Laboratory Services including SEM, EDX, XRF, FTiR, and Thermal Profiling\*
- ▶ Counterfeit component detection
- ▶ Small Scale Box Build Manufacturing
- ▶ Dye & Pry and Cross-Sectioning\* *\*With Trusted Partner*

- ▶ PCBA/PCBF Reverse Engineering Services
- ▶ Fixture Design & Manufacturing
- ▶ On-Site installation, verification, and On-going Support
- ▶ Functional Test and Test Development (C, Labview, Labwindows CV)
- ▶ "Bonepile" rehabilitation of functional, system and field failures
- ▶ Troubleshooting and rework of failed PCBAs
- ▶ BGA removal, replacement, and reballing (RoHS and Non-Rohs)
- ▶ Test statistics, failure and trend reporting

## Equipment

- ▶ Keysight/Agilent 3070 (including x1149, CET, Silicon Nails, and VTEP)
- ▶ Keysight/Agilent 5DX Automated X-ray Inspection (AXI)
- ▶ SPEA 4060 S1 Dual-Sided Flying Probe w/Goepel CASCON Boundary Scan
- ▶ SPEA 4060 S2 Dual-Sided Flying Probe with LED & High Density Wafer Test Capability

- ▶ Nordson Dage XD7600NT500 Ruby X-Ray Inspection System with X-Plane (CT-Scan) Technology
- ▶ VJ Technologies 225kV Microfocus CT System (for large objects up to 110lb) with Vi3, Fraunhofer, and Volume Graphics VG Studio MAX viewing and analysis software
- ▶ GenRad/Teradyne 2286/2287

- ▶ High-Energy Xray and CT Capability, in partnership with VJ Technologies
- ▶ Burn-In Oven
- ▶ Functional Test
- ▶ JTAG/Boundary Scan
  - Goepel CASCON (on Spea 4060 Flying Probe)
  - Asset Scanworks (Benchtop)
  - Keysight/Agilent x1149 (on Keysight 3070)

## Certifications and Affiliations

### Electronic Assembly Workmanship Certification:

IPC-A-600, IPC-A-610, IPC-A-620, J-STD-001, IPC-7711/7721

### Counterfeit Component Detection:

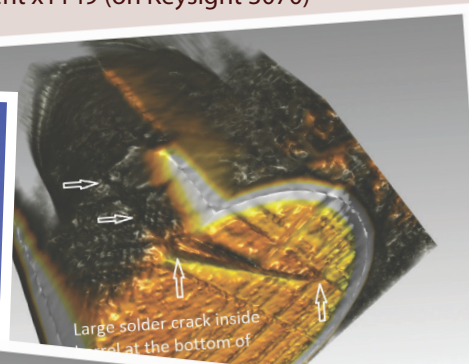
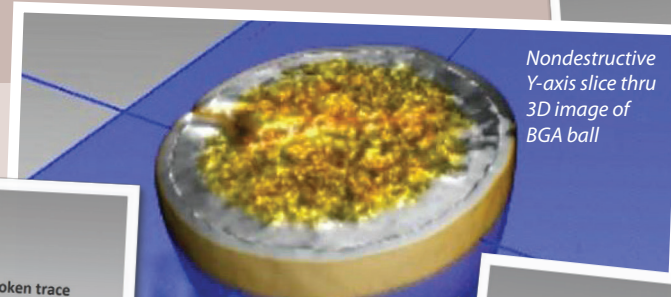
Pro-STD-001

### Professional Affiliations:

IEEE, IPC, SMTA, EIPC, ASNT

### Certifications:

AS9100D:2015  
ISO9001:2015  
ITAR



# DEMAND TEST